

J.L. WINGERT CO.

P.O. Box 6207 • Garden Grove, CA 92846-6207 / 11800 Monarch Street • Garden Grove, CA 92841-2113

Phone (714) 379-5519 • Fax (714) 379-5549 ■ Email: customerservice@jllwingert.com

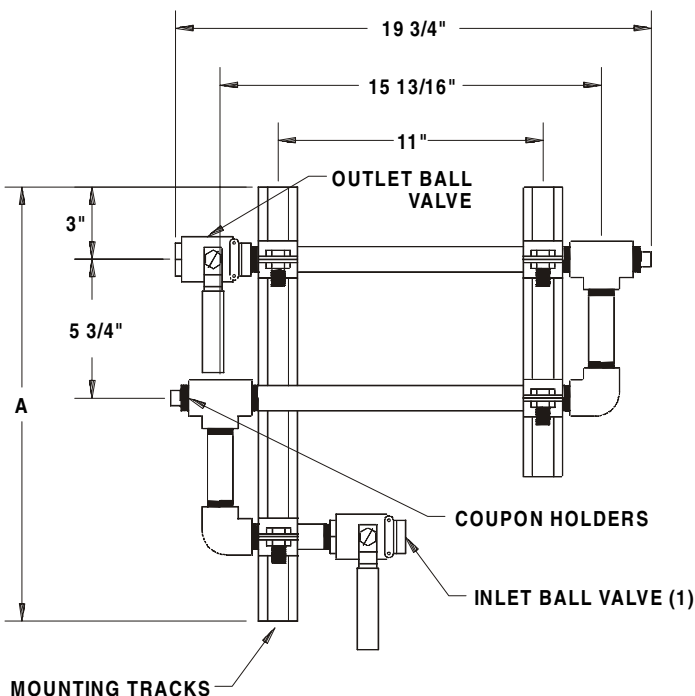
Northern California Region • Phone (510) 487-5310 ■ Southwest Region • Phone (602) 470-1015

www.jllwingert.com

MANUFACTURING: Mixers, Bypass Feeders, Filter Feeders, Bromine Feeders, Sample Coolers, Sludge Traps, Separators, Separator Systems, Tank Stands, Tank Package Systems, Glycol Feed Systems, Coupon Racks, Control Stations, NEMA Enclosures, Custom Packaged Systems and Specialty Welding

Specification Sheet #162011 Rev. "C" (3/03)

"CSCR" / "SSCR" COUPON RACKS



SPECIFICATIONS:

Carbon steel and stainless steel coupon racks are constructed from Sch 40 pipe with teflon ball valve seats. CSCR and SSCR coupon racks are secured with two 1 5/8" unistrut mounting tracks. All connections are FNPT.

REPLACEMENT PARTS:

KEY	PART NUMBER	DESCRIPTION
1	1625-007-BR	3/4" brass full port ball valve
	1625-007-SS	3/4" 316 SS full port ball valve
2	1630-04	3/4" carbon steel coupon holder
	1630-05	3/4" SS coupon holder
3	1630-06	SS sample screw

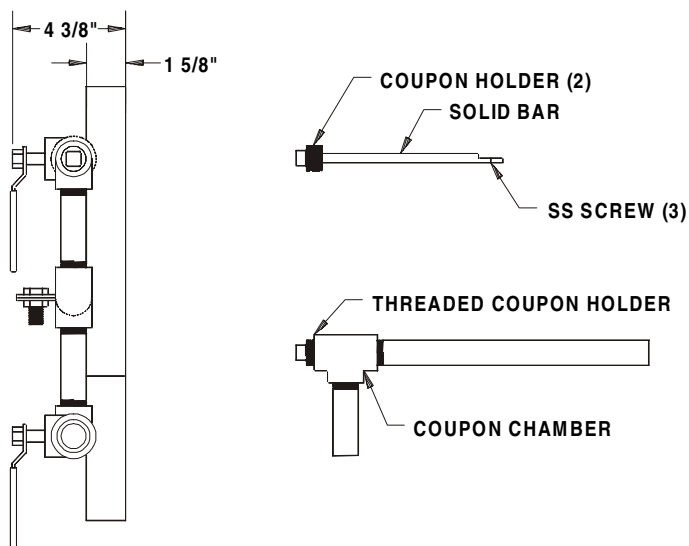
DIMENSIONS:

MODEL NUMBER	A
_CR-1-007	12"
_CR-2-007	18"
_CR-3-007	24"
_CR-4-007	30"
_CR-5-007	36"
_CR-6-007	42"

NOTE: "_" - Insert materials code
CS=carbon steel, SS=stainless steel

TEMPERATURES & PRESSURES:

TEMPERATURES	PRESSURES
200° F / 93° C	200 PSI / 13.8 BAR



SIDE VIEW

COUPON DETAIL

Note: All dimensions are +/- 1/8". All weights are approximate. All dimensions are subject to change without notice.